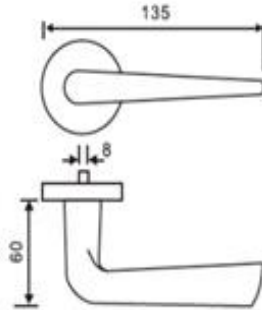


## STAINLESS STEEL



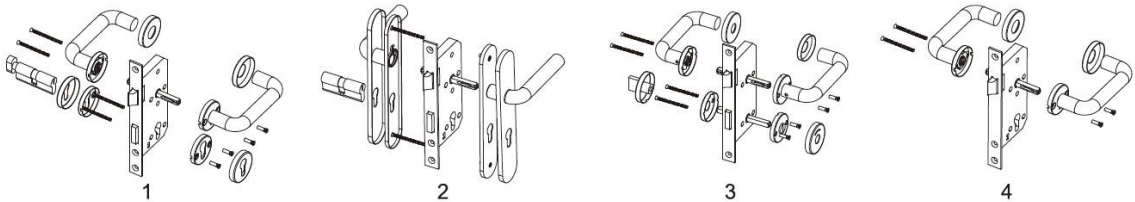
UK-S-LH.T034 - HOLLOW

### FEATURES

<ul style="list-style-type: none"> <li>Material: Stainless Steel 201 / 304 / 316</li> </ul>	<ul style="list-style-type: none"> <li>Applicable for Door Thickness: 35 – 55mm</li> </ul>
<ul style="list-style-type: none"> <li>Diameter: 16 / 19 / 20 / 22mm</li> </ul>	<ul style="list-style-type: none"> <li>Concealed fixings</li> </ul>
<ul style="list-style-type: none"> <li>Spindle: 8x8 / 7x7 6x6mm</li> </ul>	<ul style="list-style-type: none"> <li>Spring Assisted Chassis</li> </ul>
<ul style="list-style-type: none"> <li>Finish: SSS, PSS, PVD, AB, AC</li> </ul>	<ul style="list-style-type: none"> <li>Same lever design with multiple escutcheons and functions to suit different applications</li> </ul>

### APPLICATION

DOORS		PROJECTS	
<ul style="list-style-type: none"> <li>Wooden Doors</li> </ul>	<ul style="list-style-type: none"> <li>Hollow Metal Doors</li> </ul>	<ul style="list-style-type: none"> <li>Stadium</li> </ul>	<ul style="list-style-type: none"> <li>Hotels</li> </ul>
<ul style="list-style-type: none"> <li>Steel Doors</li> </ul>	<ul style="list-style-type: none"> <li>Aluminum Doors</li> </ul>	<ul style="list-style-type: none"> <li>Academic</li> </ul>	<ul style="list-style-type: none"> <li>Airports</li> </ul>
<ul style="list-style-type: none"> <li>Office Doors</li> </ul>	<ul style="list-style-type: none"> <li>Fire-Rated Doors</li> </ul>	<ul style="list-style-type: none"> <li>Mixed-use</li> </ul>	<ul style="list-style-type: none"> <li>Residential Buildings</li> </ul>



### OPTIONAL VERSION

