

- Diameter: 16 / 19 / 20 / 22mm

- Concealed fixings

- Spindle: 8x8 / 7x7 6x6mm

- Spring Assisted Chassis

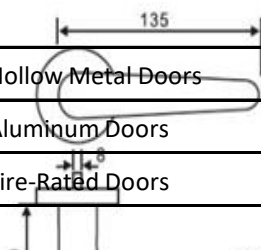
**HANDLE**

- Finish: SSS, PSS, PVD, AB, AC

- Same lever design with multiple escutcheons and functions to suit different applications

**STAINLESS STEEL**

APPLICATION			
DOORS		PROJECTS	
• Wooden Doors	• Hollow Metal Doors	• Stadium	• Hotels
• Steel Doors	• Aluminum Doors	• Academic	• Airports
• Office Doors	• Fire-Rated Doors	• Mixed-use	• Residential Buildings



**UK-S-LI**

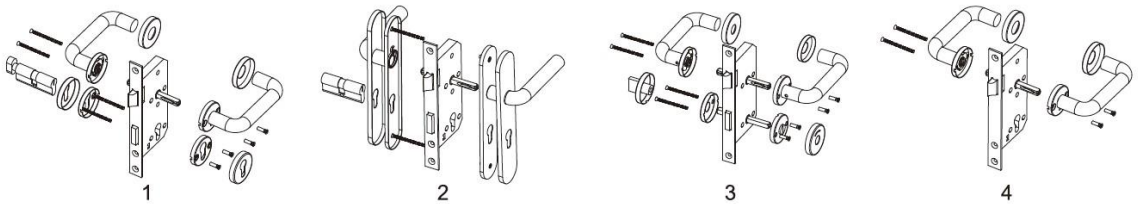
**FEATURES**

- Material: [ ]
- Diameter: 16 / 19 / 20 / 22mm
- Spindle: 8x8 / 7x7 6x6mm
- Finish: SSS, PSS, PVD, AB, AC

**OPTIONAL VERSION**

- Concealed fixings
- Escutcheons and functions to suit different applications

APPLICATION			
DOORS		PROJECTS	
• Wooden Doors	• Hollow Metal Doors	• Stadium	• Hotels
• Steel Doors	• Aluminum Doors	• Academic	• Airports
• Office Doors	• Fire-Rated Doors	• Mixed-use	• Residential Buildings



**OPTIONAL VERSION**